

ILFORD ILFOLINE PL 4 LINE FILM

A11.16 ✓

Description

ILFOLINE PL4 is a high contrast orthochromatic lith/line material of camera speed for producing high quality line images. The film is suitable for processing in lith or non-lith chemistry either in a dish or in automatic lith processors.

ILFOLINE PL4 has not been designed for rapid-access processing although acceptable results may be obtained when it is processed alongside phototypesetting materials in conventional processors with phototypesetting chemistry.

ILFOLINE PL4 is available on 0.10 mm (0.004 inch) polyester base which gives good dimensional stability. The base is coated with an anti-halation backing, may be scribed, and will accept all normal opaques and lacquers. ILFOLINE PL4 is not suitable for applications requiring a high degree of dot etching.

ILFOLINE PL4 can be processed alongside ILFOLITH, ILFOLITH GRAPHIC and ILFOLITH CONTACT films in all ILFORD lith developers and for most work the development times are the same. Furthermore, ILFOLINE PL4 can be processed alongside ILFOLITH CONTACT in non-lith developers (such as ILFOGRAPHIC LC developer) in a dish or in suitable conventional processors.

Uses

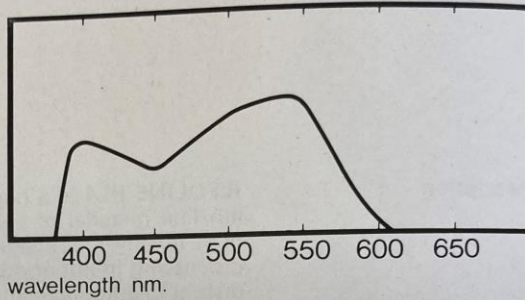
ILFOLINE PL4 has been specifically designed for line work with lith processing.

- Newspaper page reproduction
- Book reproduction
- Silk screen reproduction
- Textiles

Safelight recommendations

Use an ILFORD LR safelight no. 915 (light red), in an ILFORD darkroom lamp fitted with a 15 watt bulb. The distance between the safelight and the working area should be at least 1.2 metres (4 feet).

Spectral Sensitivity



Wedge spectrogram to tungsten halogen light (3,200 K).

Exposure

Exposure conditions and techniques vary so widely that it is not possible to give exact recommendations. For line reproduction, the following examples may be used as a guide.

Camera exposure—
Line reproduction

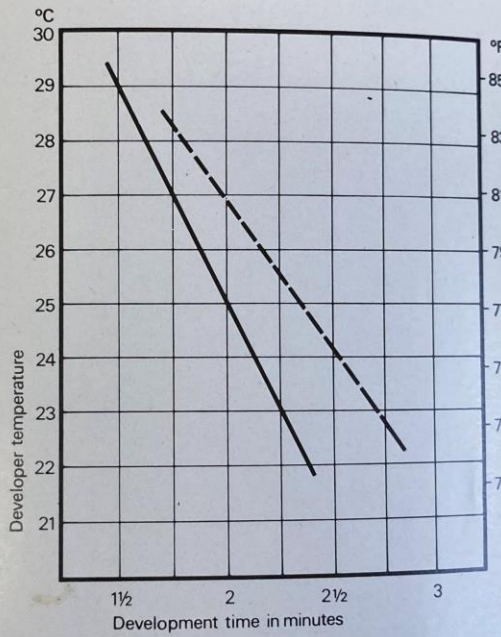
Reproduction ratio	1:1
Distance	1.2 metres
Angle	45°
Light source	Two 1,500 watt pulsed Xenon lamps
Aperture	f32
Exposure	16 seconds
Development	ILFOLITH ML 2 minutes at 25–27°C in an automatic processor ILFOLITH DL (1+3) 3 minutes at 20°C with continuous agitation

Contact exposure

Lamp	15 watt pigmy bulb
Distance	1 metre
Exposure	6 seconds
Development	same conditions as for line exposure (see above)

Machine development
(Lith)

The following time/temperature chart provides a guide to the optimum development times in ILFOLITH ML and PR developers at various machine operating temperatures:



----- Pako Super G 24-2
 _____ LogEflo LD-24

Replenishment rate

750 ml replenisher for every square meter of 100% exposed film.

Machine development
(Non-Lith)

The use of a non-lith developer such as ILFOGRAPHIC LC will give slightly reduced contrast

ILFORD Developer
 ILFOGRAPHIC
 PHENISOL

Replenish

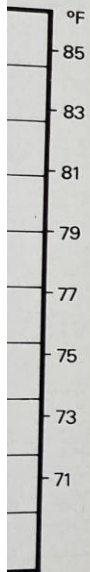
Dish proc

ILFORD developer
 ILFOLITH
 ILFOLITH
 ILFOGRA

Fixing

Washing

vides a
mes in
various



but wider processing latitude. Such developers are more stable against aerial oxidation and require less replenishment.

In suitable conventional machines, such as those available for phototypesetting materials (e.g. Kodak Versamat 17), the following conditions provide a guide.

ILFORD Developer	Temp. °C	Recommended development time	Range
ILFOGRAPHIC LC (1 + 3)	27	1½ mins.	1¼–2 mins.
PHENISOL (1 + 3)	27	1½ mins.	1¼–2 mins.

Replenishment rate 300–500 ml replenisher for every square metre of 100% exposed film.

Dish processing The following recommended development times refer to dish development with continuous agitation at 20 °C:

ILFORD developer	Optimum development time (mins.)	Range (mins.)
ILFOLITH DL (1 + 3)	3	2½–3½
ILFOLITH PR	3	2½–3½
ILFOGRAPHIC LC (1 + 3)	3	2–4

Fixing

Use either ILFORD HYPAM or ILFORD IF-23 and fix for twice the time it takes the emulsion to clear. For machine use, where hardening is required, add Rapid Hardener to HYPAM fixer in the recommended proportions:

1 part Rapid Hardener to 40 parts of working strength HYPAM.

Washing

Wash the films thoroughly for five minutes in running water and finally rinse in water containing a few drops of ILFORD ILFOTOL wetting agent.

100%

FO-
trast