

# C 252 (8x10inch)

System „P“



System „LED“



System „T“



mounted on baseboard



wallmounted



freestanding equipment with moveable projection plate

- C 252/ T/1000 VA with motorized
- height setting
  - focusing system
  - height setting of
  - projection plate

## C 252

Highly efficient compact - 8x10“ / 20x25 cm-enlarger in metal construction.

Modular system with colour-head, multigrade-head, black & white-head, LED-cold light-head, condensor-head or SplitVC- head

... in prime quality



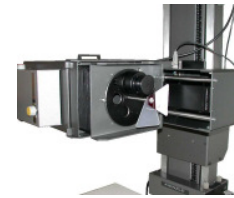
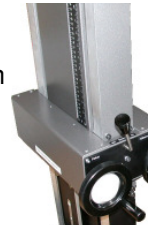
Timer with probe

SplitVC-Controller



VCC Controller

1500mm column with handle (heightsetting) and brake



Wallprojection/ Lens turret

**KIENZLE**

Your specialist for individual requirements

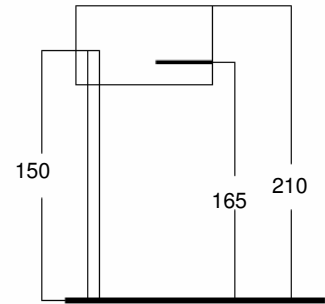
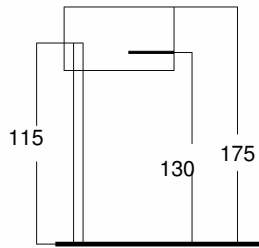
*C 252-Systems technology with dimensions in cm (ca sizes)*

Stoppersystem for lower ceiling heights;

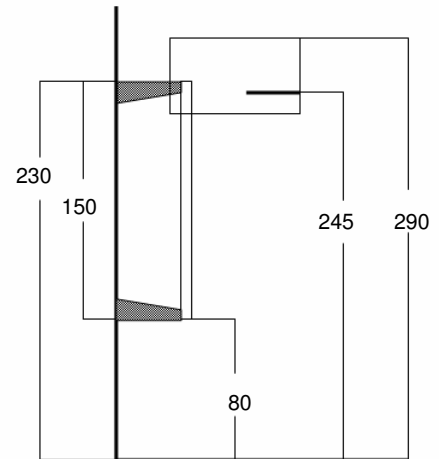
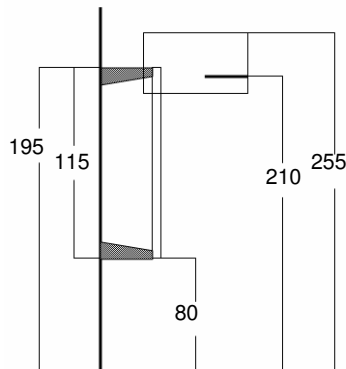
optional : Wallprojection

Mounted on baseboard

(column length 115 or 150 cm)

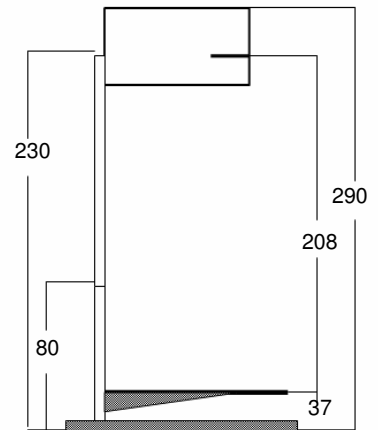
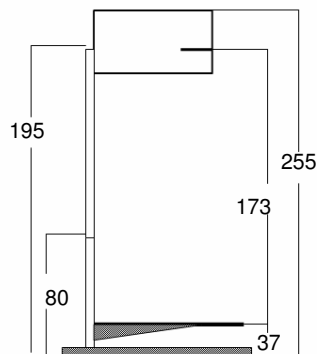


with wallmount



freestanding equipment with moveable projection plate;

sizes with projection plate in lowest position



Maximum printsizes with 8x10" negative and 240mm lens (in cm).

Max.printsizes with other negative-sizes and appropriate lenses upon request

columnlength	with baseboard	with wallmount, onto floor	Freestanding,plate in lowest position
115cm	ca 70 x 87	ca 120 x 150	ca 100 x 125
150cm	ca 90 x 110	ca 160 x 200	ca 120 x 150

**KIENZLE**

