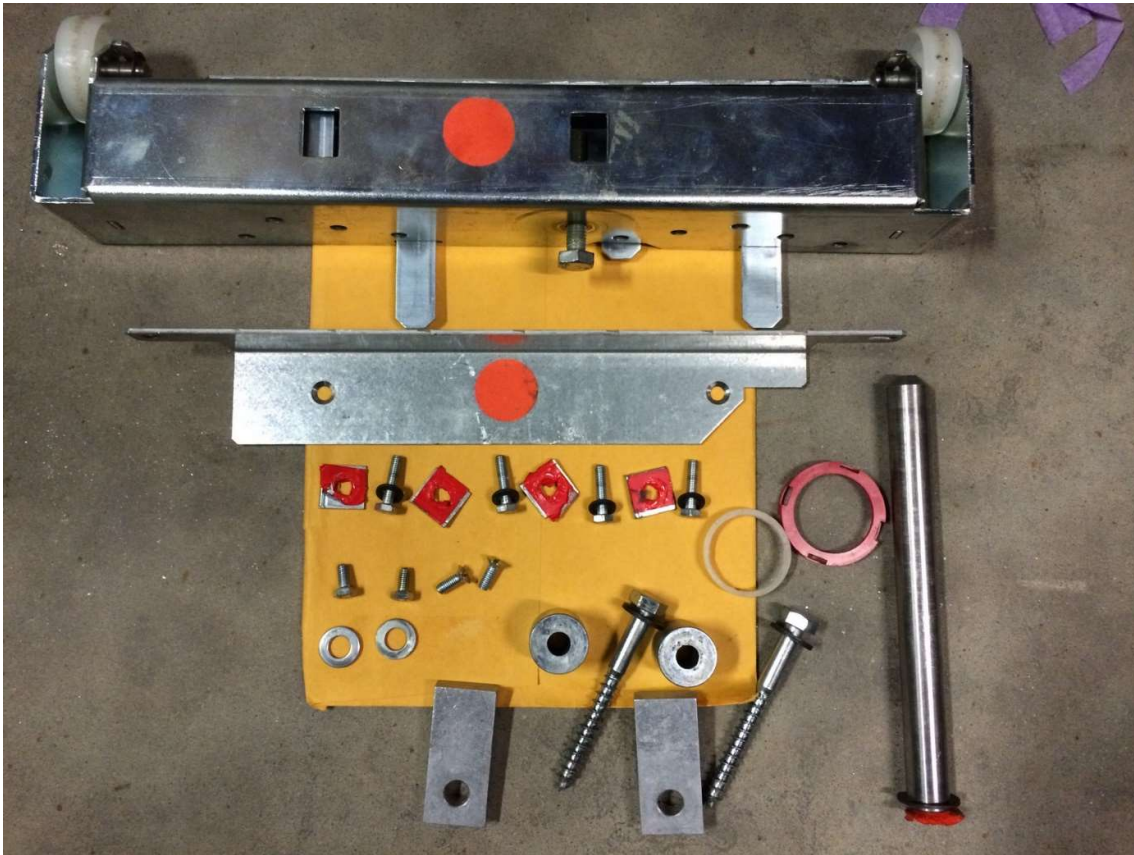
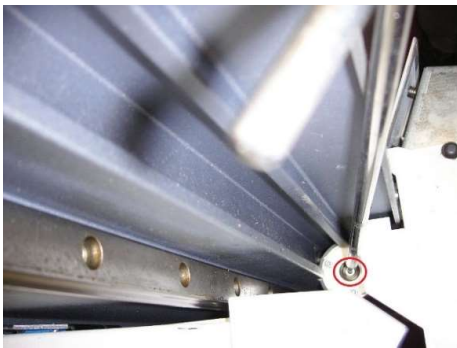


Do this first before moving the Primescan / Tango Drum Scanner:



This photo shows a complete set of transport locks. (If this kit is missing completely, skip to the last page of this document). Start at the bottom of the machine by inserting the large metal pin (shown at the far right) first. This large pin locks the scan head, when inserted into the back, near the floor. It will go all the way in, but *only* when the head is in the correct height position! To accomplish this, **there's a 3mm allen screw at the top of the lead screw spindle, (look straight down on the right hand side of the drum drive as shown in the photo below)**. Using a 3mm allen wrench you can fine-position the head so the screw holes on the counterweight, AND the large pin that goes in the back, are both lined up to be locked down. Use two hands while inserting the large pin, one hand on the Allen wrench and one pushing the pin slightly. You will feel the point, while turning the spindle screw, where it goes in easily. Once it goes all the way in, the position for locking the counterweight is also correct.



Locking the counterweight:

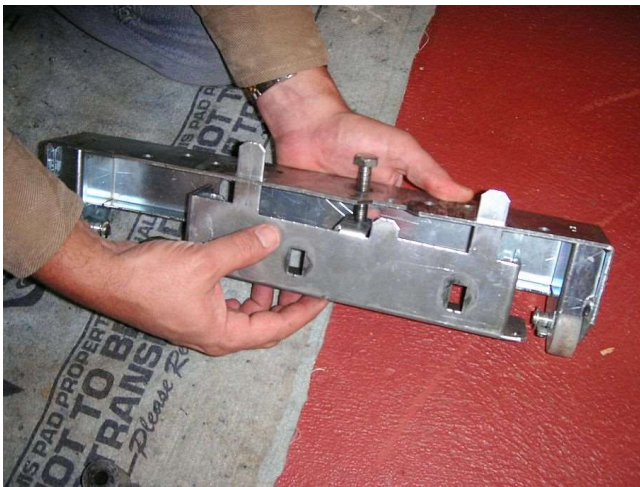
Using the four wedge shaped washers with screws shown in the photo, place them on either side of the counterweight cable as shown in the next photo. Before tightening these screws all the way, put a piece of Styrofoam behind the steel cable first, in the center, (for cushioning during transport. Use the four

screws with the ramp-shaped washers (thicker side towards the center) to lock the counterweight. BTW, these usually have 4mm Allen Heads or a 10mm Hex Head. At this point you have the Scanning Head (locked by the large pin) and the Counterweight locked (by the four screws w/ washers).



Attaching the Rear Wheel Kit:

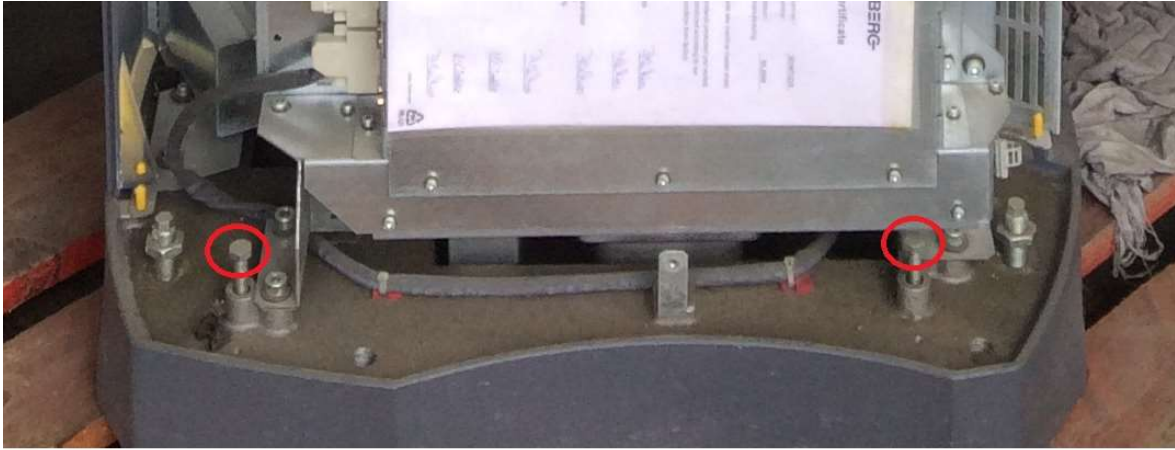
Remove the curved stand, in the back near the floor, using an 8mm Allen wrench. Attach the first part of the wheel kit (with metal tabs pointing upward) by inserting the **cylindrical stand-offs** into the rear chassis recesses as shown in the photo below. Re-use the long 8mm screws, (which you just removed from the curved gray stand), to secure the rear wheel-kit bracket (see 2nd photo) nice & tight.



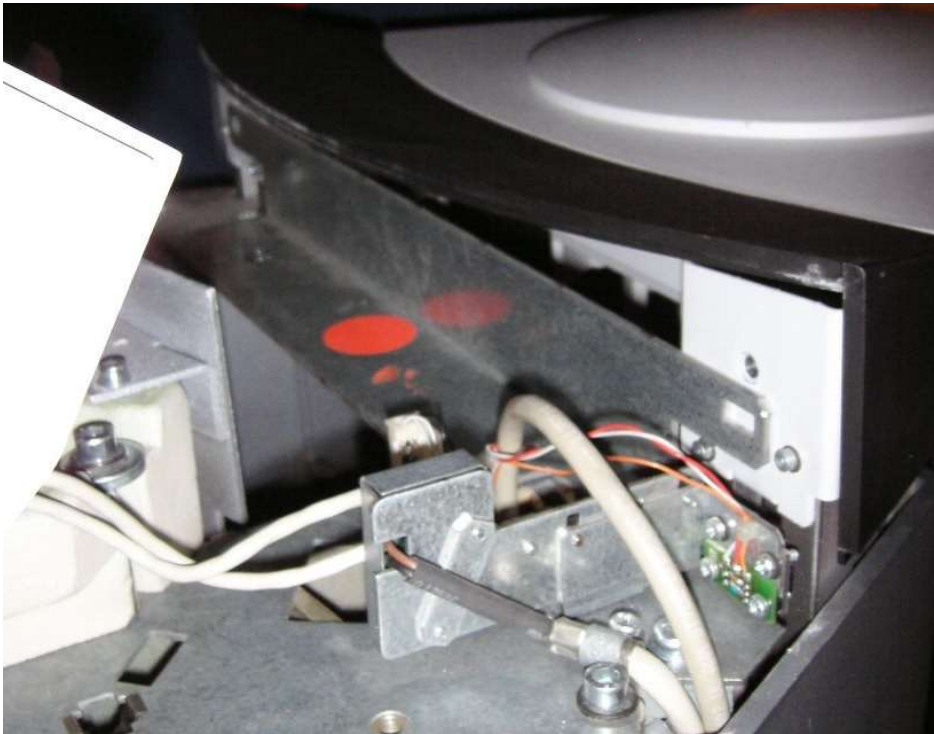
Then slip the bracket (with the actual wheels on it) over the two tabs (look for the two slots that correspond to the two tabs). Use the single 17mm Hex Head screw to join these two pieces together. Screw the screw all the way in. Do not leave a gap between these two plates. This action will also be lifting the back of the scanner off the feet as you turn the screw. Once done, the back will be raised all the way up so the leveling feet are no longer touching the floor. Open the two plastic access panels just above each foot and raise the feet as high as you can, so they are retracted into and protected by the main chassis.

Now raise the front of the scanner onto its built-in wheels:

Using a 13mm Hex Head wrench, screw the two built-in front wheels all the way down. This will raise the front of the machine off of the feet. These two screws are located between the leveling screws that turn the feet up or down. After you have the weight off the front feet, you can raise each side by hand until the front feet are all the way up and protected by the main chassis (or base of the scanner). Be sure to do the same for the rear leveling feet as well to protect them from damage. At this point, your scanner is on four wheels and all four feet have been retracted upward. Double-check this condition before proceeding.



There's another bracket that keeps the hood from opening during the move. You can always open the hood by hand easily, but you need power again to close it. It's simply a matter of plugging in the scanner, turning it on, and waiting for the lamp in the "hood" button to go off. Then you can press it and the hood will go down again. After lowering the hood, attach the long 'L' bracket as the very last thing you do. This will keep the hood from opening during the move.



In the event the original Transport Lock Kit is lost or no longer available:

The minimum which should be done are to:

- 1) Lock the counterweight with the four screws / washers (purchased locally as metric M6) and
- 2) Raise the four leveling feet (like a turtle retracting its arms and legs) to protect them from lateral shearing
- 3) Tape the hood so it can't move upward during the move! You'll need power to lower it if it does!!



Hudson Grafik Services, Inc.

USA Text / Voicemail: +1-678-208-5844

Deutsche Handy / WhatsApp: +49 178 470 1991

hudsongrafik@gmail.com