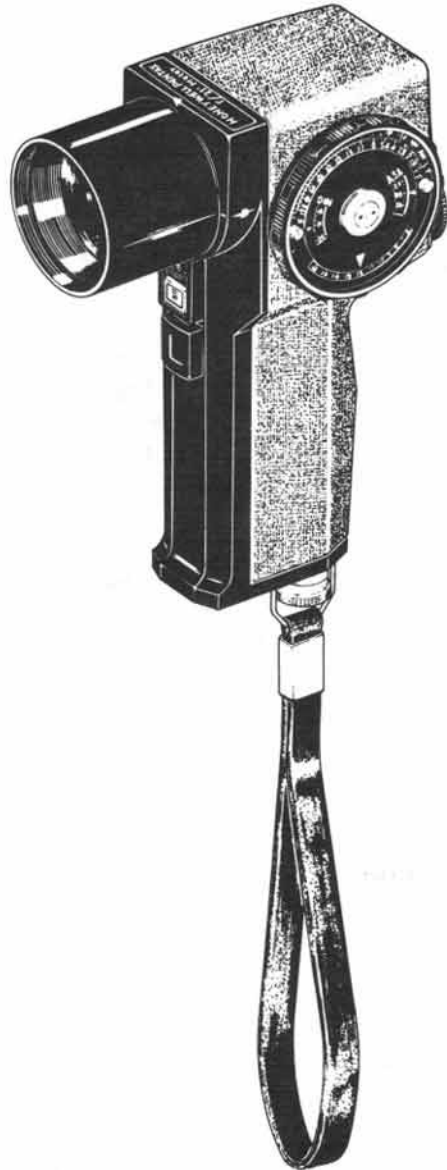


HONEYWELL PENTAX

1°/21° METER

Product NO.293



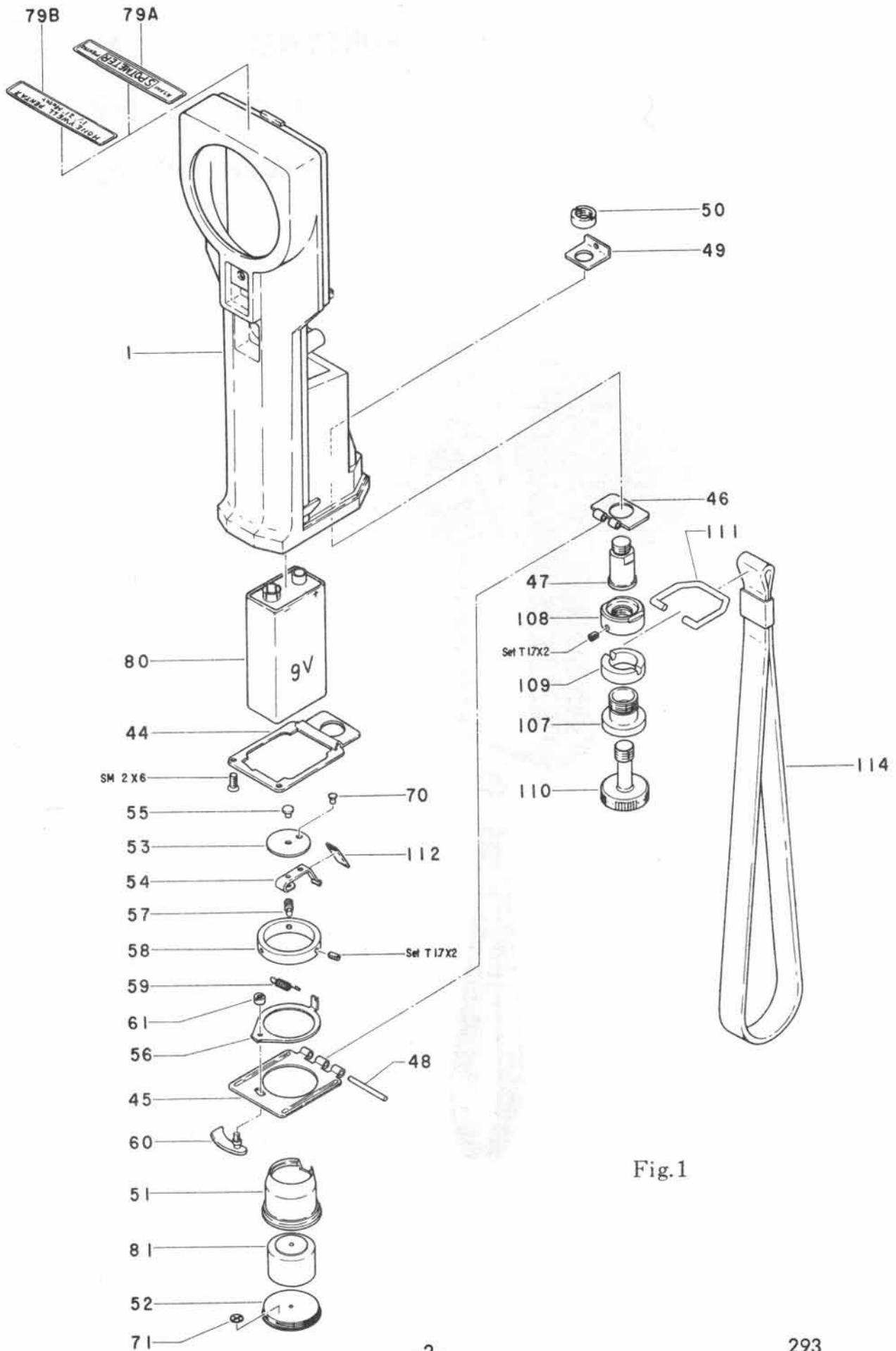


Fig.1

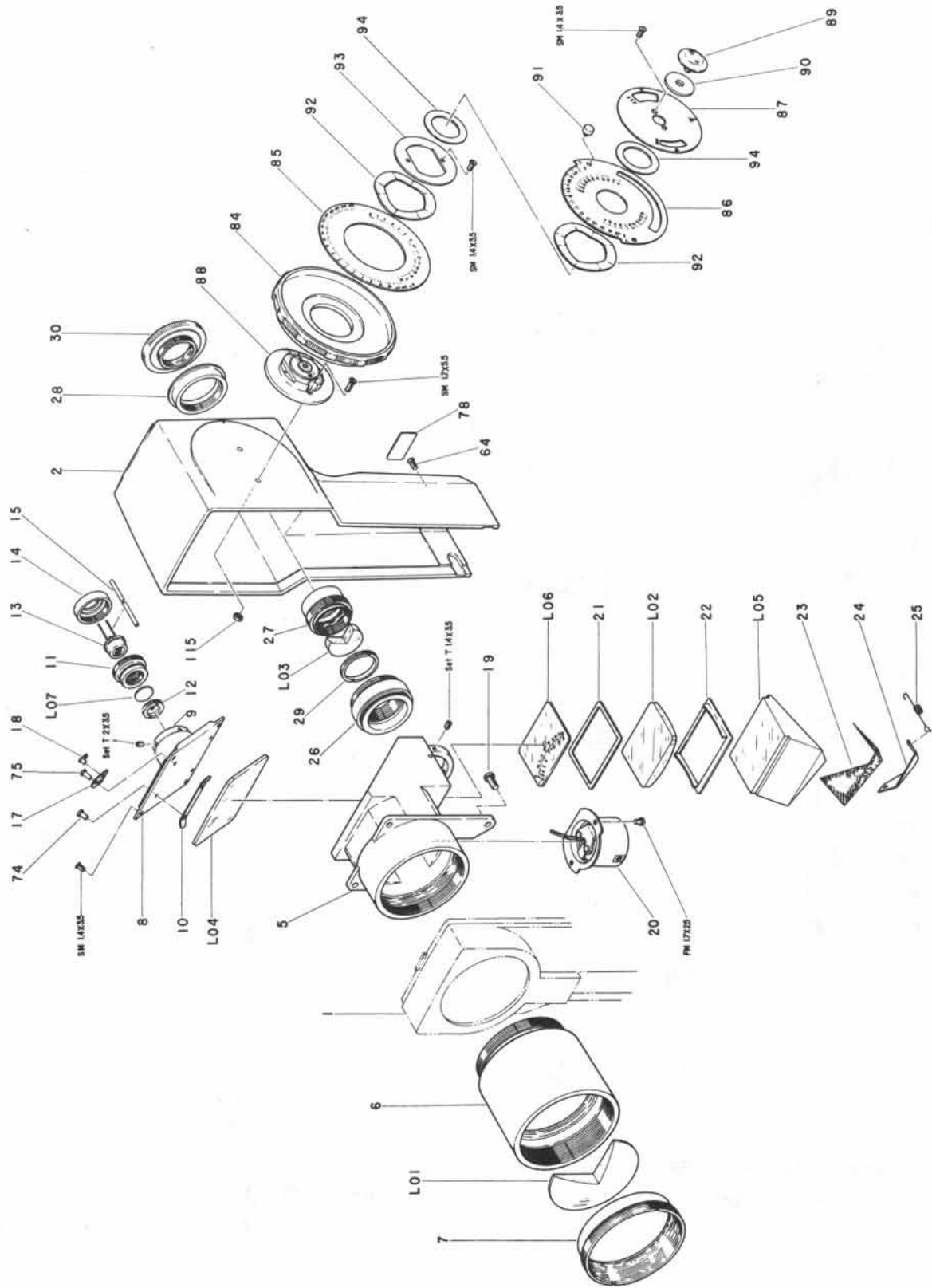
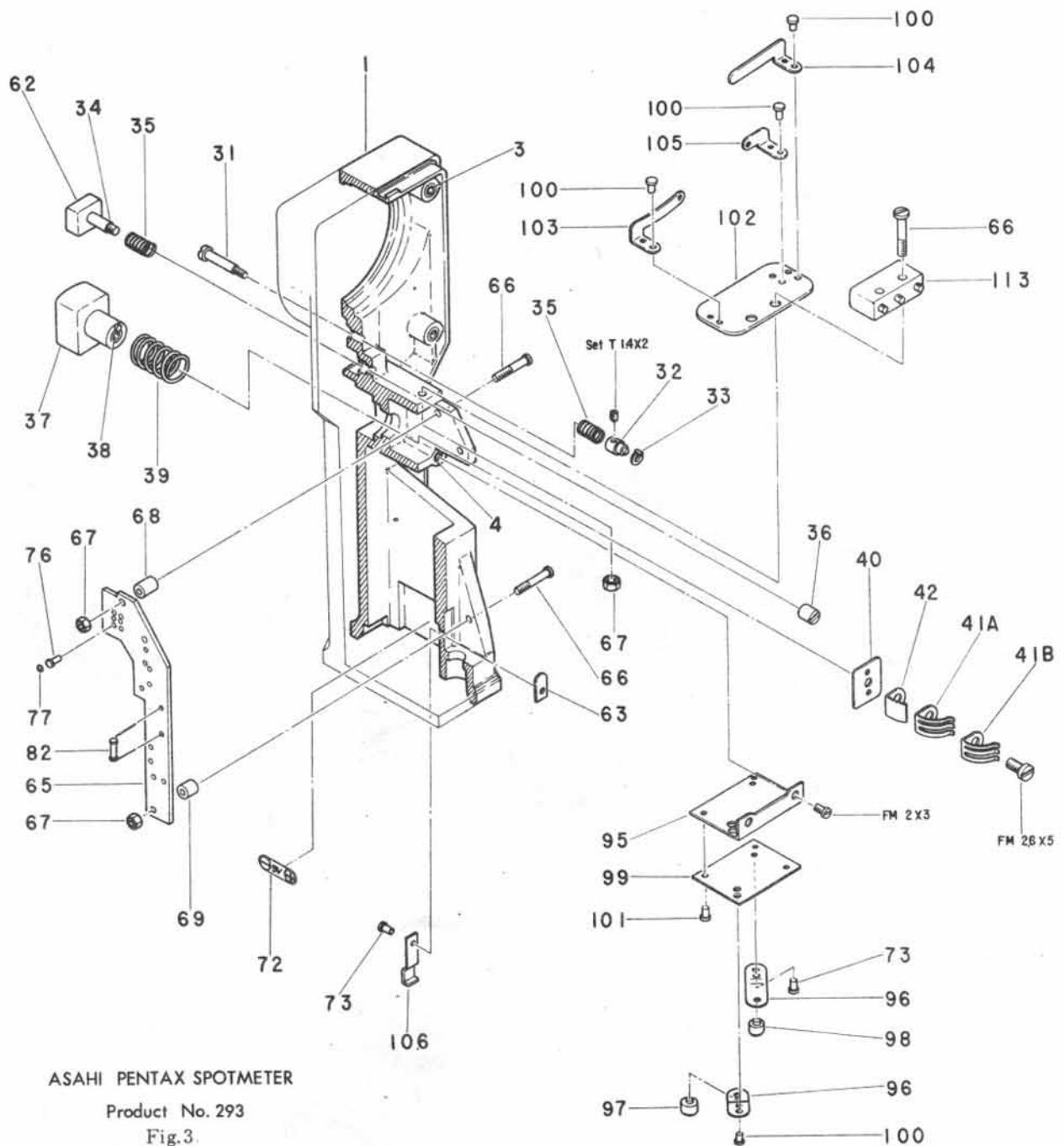
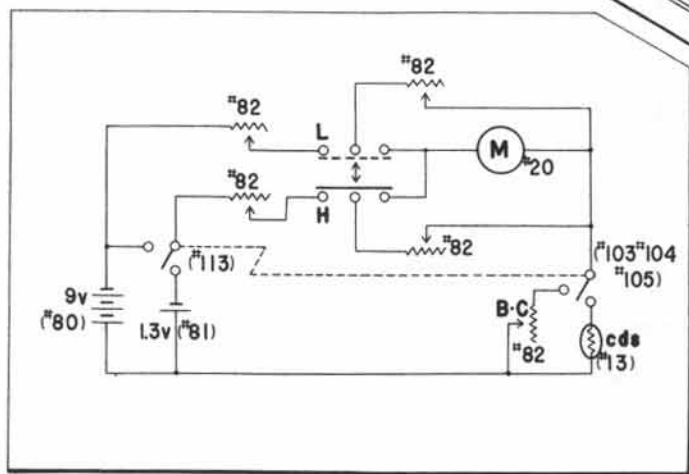
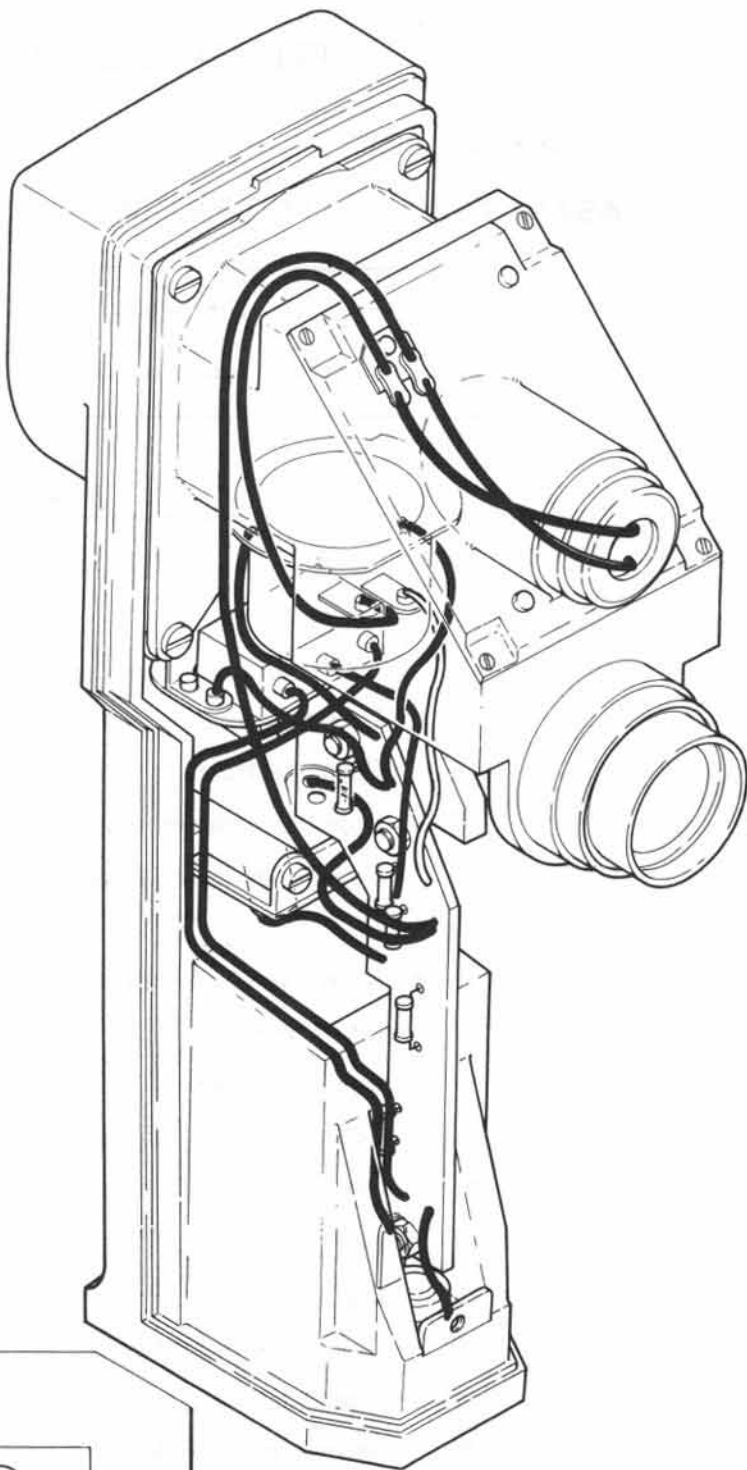


Fig.2

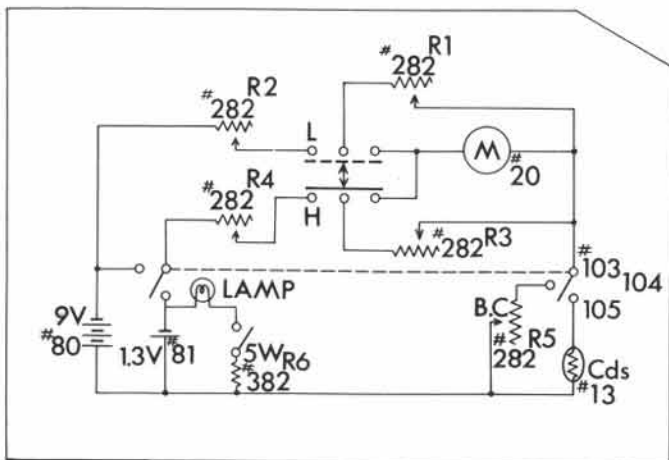
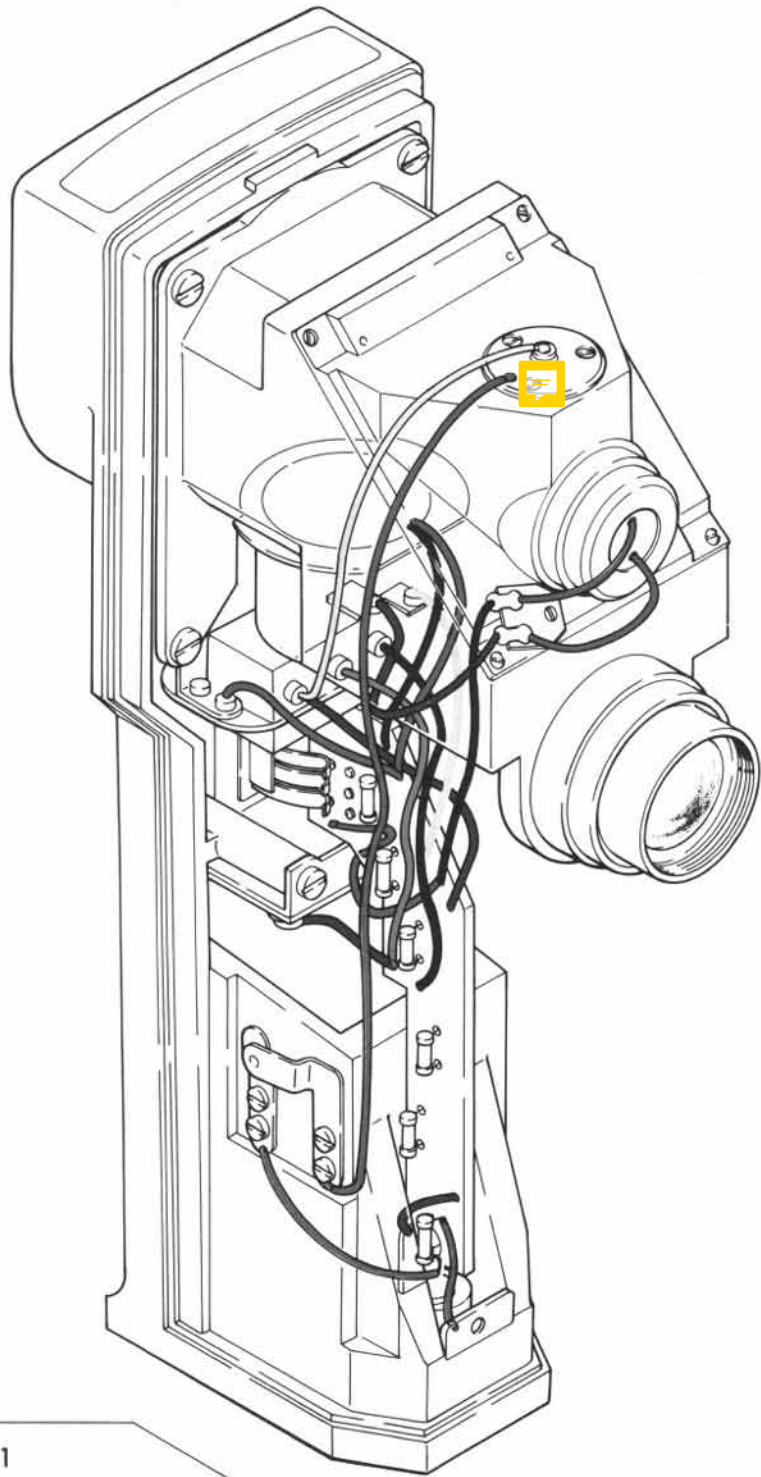


ASAHI PENTAX SPOTMETER
 Product No. 293
 Fig.3.



DISTRIBUTING WIRES

Fig. 4



DISTRIBUTING WIRES

ASAHI PENTAX SPOTMETER
Product No. 62931

Fig. 4

LIST OF SERVICE PARTS

Product No. 293

ASAHI PENTAX SPOTMETER

Note: The parts with numbers starting with '0' are assembled parts, and the * marked parts are included in the '0' starting assembled parts.

Parts No.	Description	Quantity
01	Body assembly (1, 3 \times 4, 4 \times 2, 72, 73, 79, 106)	1
2	Cover	1
3 *	Insert A	4
4 *	Insert B	2
5	Lens barrel	1
6	Objective frame	1
7	Objective retainer ring	1
08	CdS holder assembly (8, 9, 10 \times 2, 17, 18 \times 2, 74 \times 3, 75)	1
9 *	Insert C	1
10 *	Mirror retainer plate	2
11	CdS frame	1
12	One degree cover	1
13	CdS cell	1
14	CdS retainer ring	1
17 *	Lug plate	1
18 *	Lug	2
19	Lens barrel installing screw	4
20	Ammeter	1
21	Ground glass mask	1
22	Ground glass retainer	1
23	Prism cover	1
24	Prism retainer plate	1
25	Prism retainer spring	2
026	Eyepiece exterior tube assembly (26, 27)	1

Parts No.	Description	Quantity
27 *	Eyepiece interior tube	1
28	Exterior tube cover	1
29	Eyepiece retainer ring	1
30	Eye cup	1
31	Zero point adjusting shaft	1
032	Zero point abjusting shaft extension shaft assembly (32, 33)	1
33 *	Zero point adjusting pin	1
34 *	Battery checker ,button shaft	1
35	Checker spring	2
36	Checker stud	1
037	L button assembly (37, 38)	1
38 *	Insert D	1
39	Button spring	1
40	Button stopper plate	1
41A	Contact plate A	1
41B	Contact plate B	1
42	Contoct plate retainer	1
44	Base plate	1
045	Bottom cover assembly (45, 46, 48, 51, 53, 54, 55, 56, 57, 58, 59, 60, 61, 70, 112, Screw Set T 1.7×2×2)	1
46 *	Socket seat	1
47	Socket screw	1
48 *	Hinge shaft	1
49	Washer	1
50	Nut	1
51 *	Mercury battery chamber	1
052	Battery cover assembly (52, 71)	1
53 *	Insulator seat	1
54 *	H contact piece	1
55 *	Dry battery receptacle	1
56 *	Lock plate	1
57 *	Spring hanger screw	1

Parts No.	Description	Quantity
58 *	Stopper ring	1
59 *	Lock spring	1
60 *	Opener shaft	1
61 *	Opener shaft nut	1
062	Battery checker button nssembly (62, 34)	1
63 *	H terminal	1
64	Cover retainer screw	1
065	Print wiring base assembly (65, 76×6, 77×6)	1
66	Print wiring base retainer	5
67	Retainer screw nut	5
68	Spacer A	2
69	Spacer B	1
70 *	H contact piece rivet	1
71 *	Electrode index plate A	1
72 *	Electrode index plate B	1
73 *	H terminal rivet	3
74 *	Mirror retainer plate rivet A	3
75 *	Mirror retainer plate rivet B	1
76 *	Print wiring base terminal rivet	6
77 *	Contact piece	6
78	Nameplate	1
76A*	Body nameplate A ASAHI PENTAX SPOTMETER	1
79B*	Body nameplate B HONEYWELL PENTAX 1/21 METER	1
82	Semi-fixed resistor	5
83	Lead wire	8
084	Index ring assembly (84, 85)	1
85 *	Shutter speed scale plate	1
086	Film sensitivity scale plate assembly (86, 91×2)	1
87	Index plate	1
88	Scale ring shaft	1
89	Cover ring nut	1
90	Cover ring nut washer	1

Parts No.	Description	Quantity
91 *	Film sensitivity plate stud	2
92	Sdale plate spring washer	2
93	Scale ring shaft washer	1
94	Spacer washer	2
095	Electrode contact base assembly (95, 73 \times 2, 96 \times 2, 97, 98, 99, 100 \times 2, 101 \times 2)	1
96 *	Cathode plate (or Anode plate)	2
97 *	Cathode terminal	1
98 *	Anode terminal	1
99 *	Electrode contact insulator plate	1
100 *	Switch contact plate rivet A	8
101 *	Switch contact plate rivet B	2
0102	Switch contact base assembly (102, 100 \times 6, 103, 104, 105)	1
103 *	Contact plate	1
104 *	Micro-switch retainer plate	1
105 *	Contact stopper plate	1
106 *	H terminal B	1
0107	Strap joint shaft assembly (107, 108, 109, 110, 111, Screw Set T 1.7 \times 2.0)	1
108 *	Strap joint shaft nut	1
109 *	Strap joint receptacle	1
110 *	Installing screw	1
111 *	Strap joint	1
112 *	Insulator tube	1
113	Micro-switch	1
114	Wrist strap	1
115	Scale ring shaft nut	2

Parts No.	Description	Quantity
L 01	Objective	1
L 02	Ground Glass	1
L 03	Eyepiece	1
L 04	Mirror	1
L 05	Pentaprism	1
L 06	Scale glass	1
L 07	Filter	1

LIST OF STANDARD PARTS

Product No. 293

ASAHI PENTAX SPOTMETER

Small Screws

Description	Surface Treatment	Place of Use	Quantity
FM 1.7×2	Black	5, 25	2
„ 1.7×2.5	„	5, 20	2
„ 2.0×3	„	4, 95	2
„ 2.6×5	„	37, 40, 41, 42	1
SM 1.4×3.5	„	88, 93	2
„ 1.7×5.5	„	2, 88, 115	2
SS 1.4×3.5	„	5, 8	4
„	„	88, 87	2
„ 2.0×6	„	1, 44	2
Set T 1.4×2	„	31, 32	1
„ 1.4×3.5	„	5, 26	3
„ 1.7×2	Nickel	51, 58	2
„	„	107, 108	1
„ 2.0×3.5	Black	9, 11	3